

# Remote Debug

---

## Summary

---

This guide discusses remote debug for applications running on WAS (Jboss, JEUS, WebLogic) of remote computer.

## Description

---

Using Client/Server design of Java Debugger, Java programs can be launched from network-connected computer and then debugged from the platform-running workstation.

Note: To enable remote debug, ensure you're using JVM supporting this feature.

## Debug Process

1. Build Java Program
2. Deploy Java Program to Remote Computer
3. Run Server after JVM option is set on the remote computer
4. Specify remote computer's address and port in the workstation to debug

## Environmental settings

---

In order to debug remotely, remote computer's WAS server should be started with following JVM options.

```
-Xdebug -Xrunjdpw:transport=dt_socket,address=8000,server=y,suspend=n
```

### Jboss

Include previous options to JAVA\_OPTS variable in run batch script file.

```
set JAVA_OPTS=-Xdebug  
-Xrunjdpw:transport=dt_socket,address=8000,server=y,suspend=n  
%JAVA_OPTS%
```

### JEUS

Add following options to command-option of Container options in JEUSMain.xml.

```
-Xdebug -Xnoagent  
-Xrunjdpw:transport=dt_socket,address=8000,server=y,suspend=n  
-server
```

### Weblogic

Add previous options to JAVA\_OPTS variable in startWebLogic batch script file as shown below.

```
set JAVA_OPTS= -Xdebug -Xnoagent  
-Xrunjdpw:transport=dt_socket,address=8000,server=y,suspend=n  
%JAVA_OPTS%
```

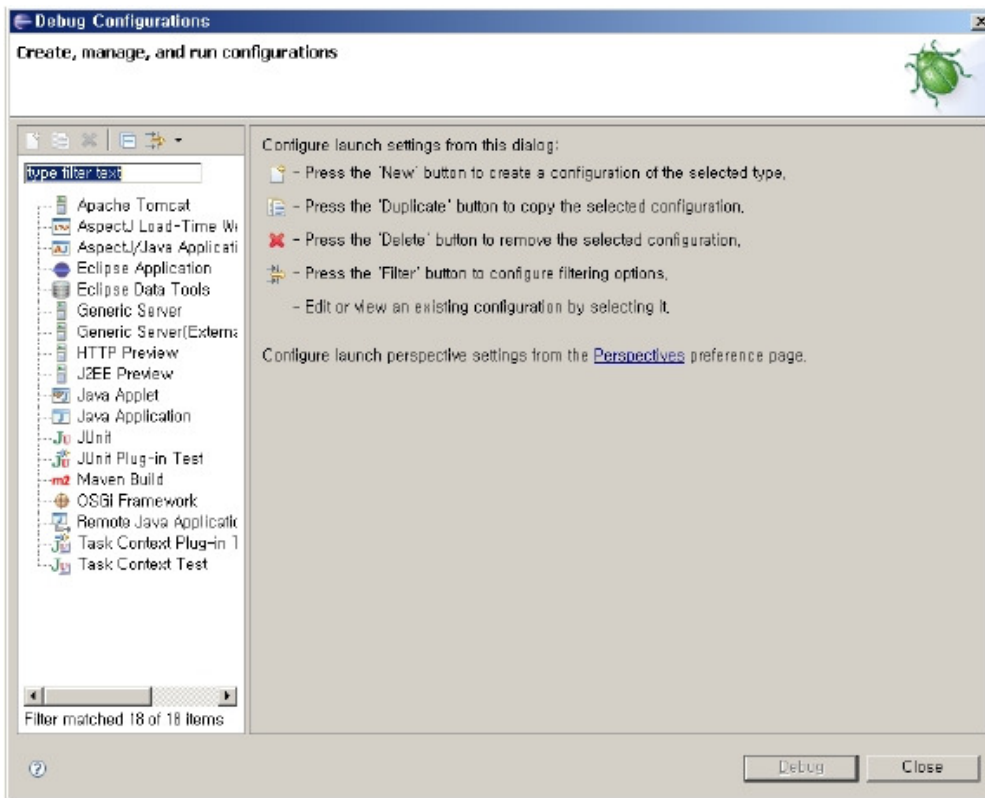
This means, port number 8000 will be used to remote debugging.

## Manual

---

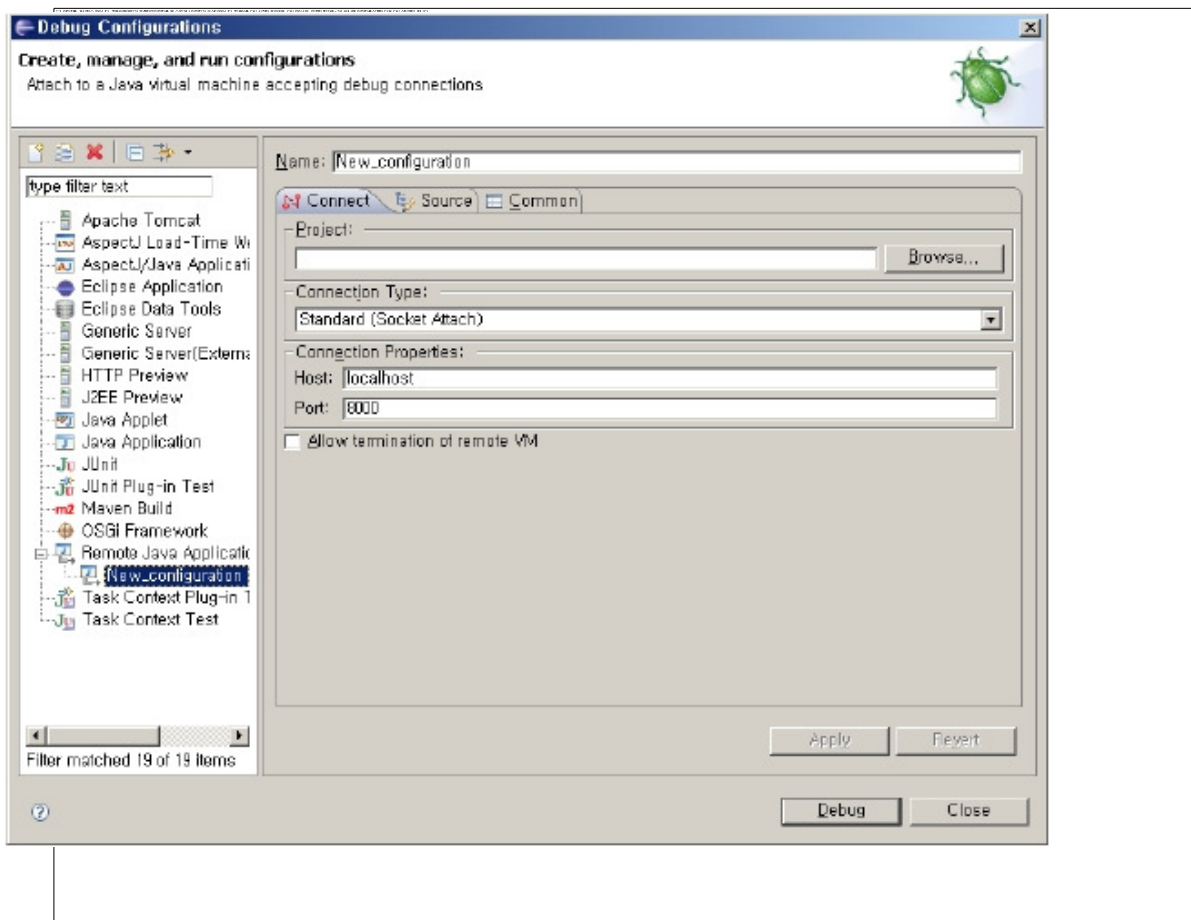
Follow this tutorial to Configure Remote Java Application Running.

- Select Run > Debug Configurations... in Workbench Menu to open Debug Configurations dialog.

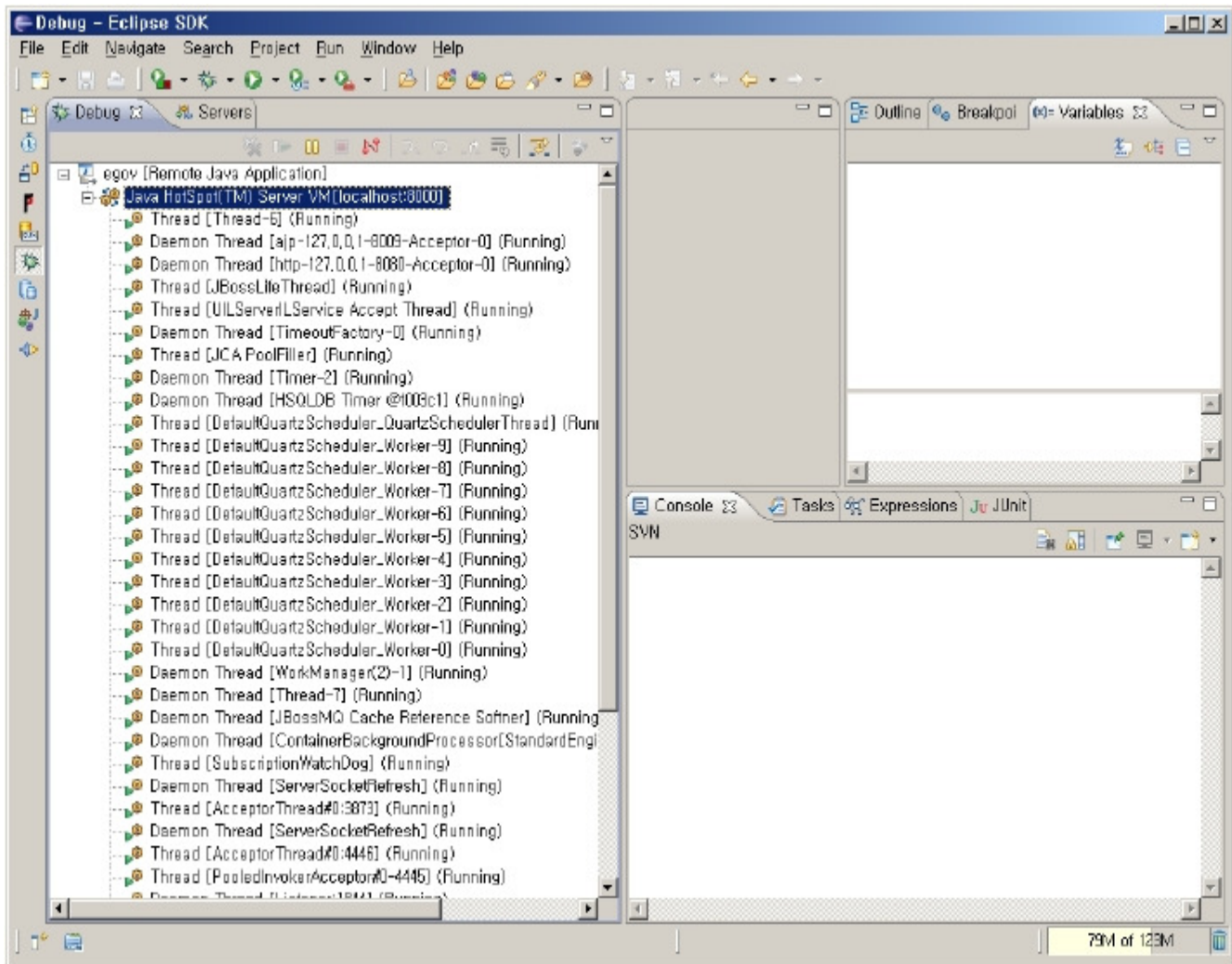


- Select Remote Java Application in configuration type list at the left pane.
- Click New launch Configuration toolbar icon. New Remote Launch Configuration will appear with three tabs: Connect, Source, Common.





- Fill Project field or browse to the project with the reference to launch (for source search) in Connect tab.
- Enter IP address or Domain name of Host where Java program will run to Host field in Connect tab. If the program runs on the same system as Workbench, then enter localhost.
- Enter port for remote VM connection in Port field in Connect tab.
- Turn on "Allow termination of remote VM" checkbox to enable termination of VM while connected.
- Click debug.
- If debug perspective is selected, Thread info for remote computer is displayed.



- Set breakpoints at specific points of the program to debug, then invoke the service using web browser to launch target program.

## Reference

- <http://help.eclipse.org/help32/topic/org.eclipse.jdt.doc.user/concepts/cremdbug.htm>  
[<http://help.eclipse.org/help32/topic/org.eclipse.jdt.doc.user/concepts/cremdbug.htm>]